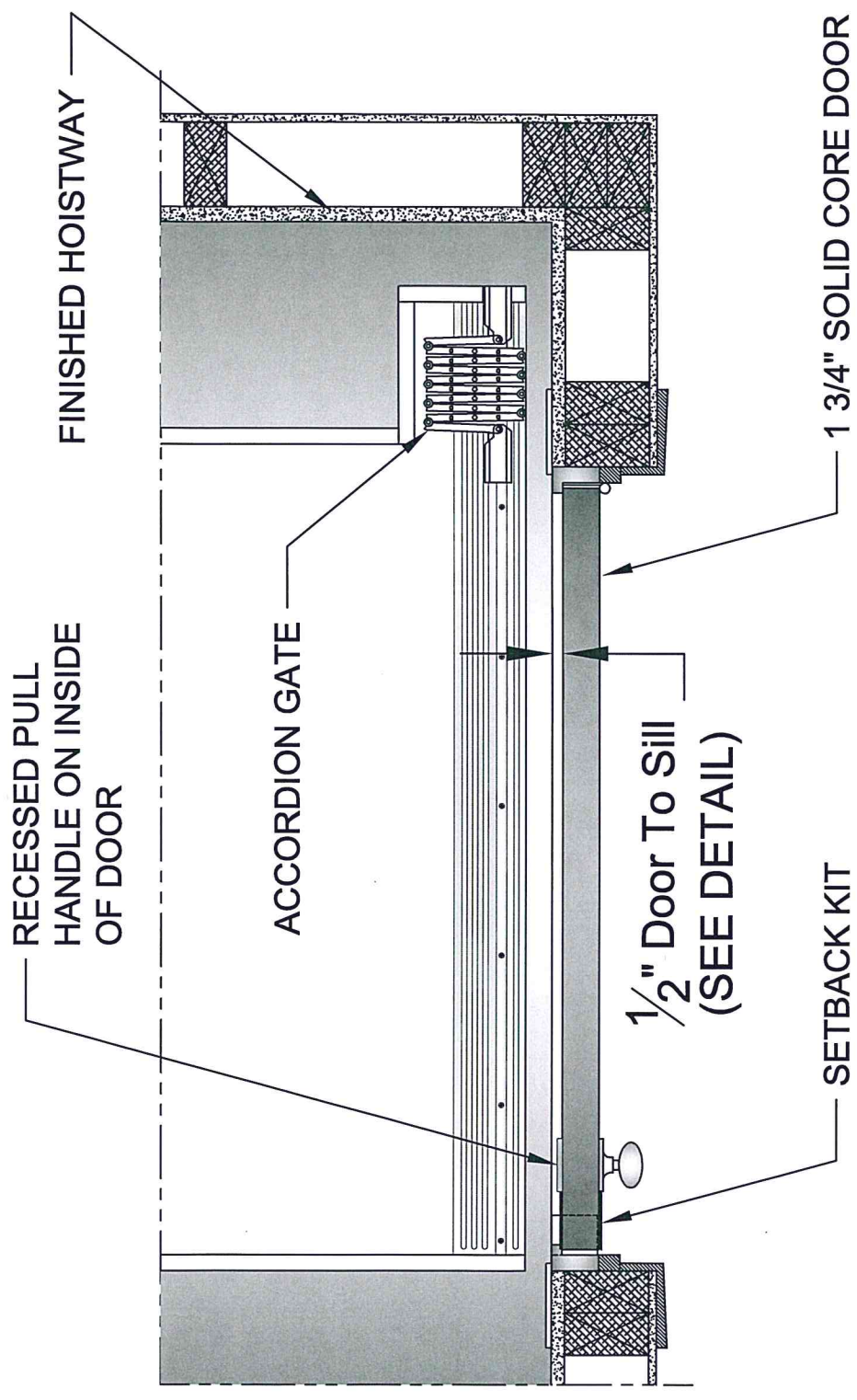



DETAIL



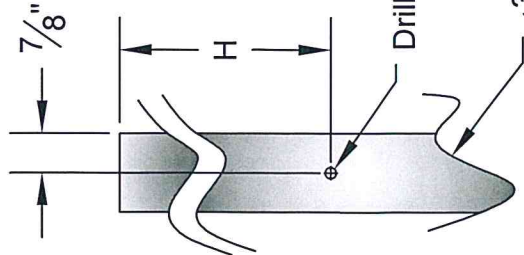
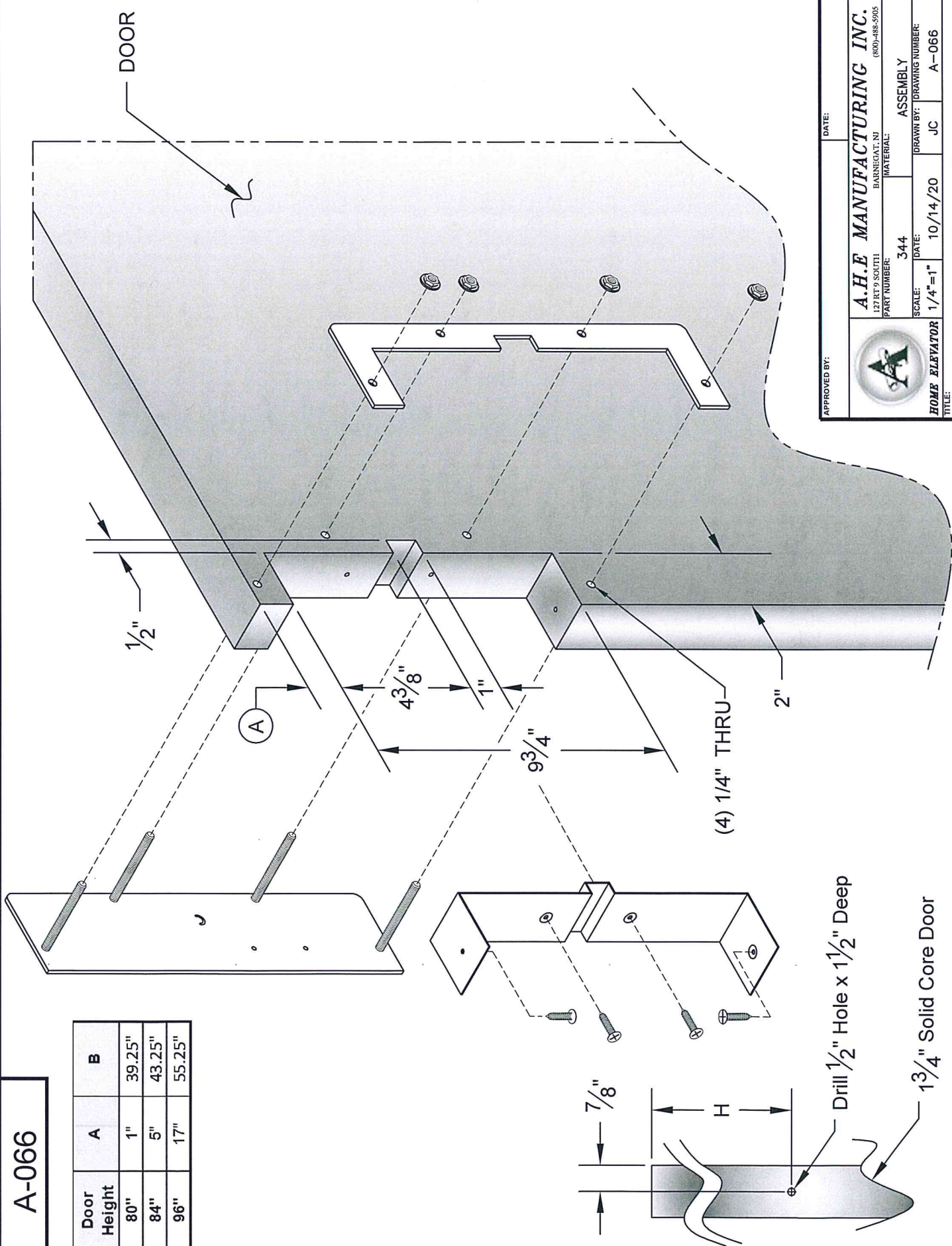
NOTE:

- 2 1/4" DOOR FRAME WITH 1/2" STOP, SET FLUSH TO THE INSIDE EDGE OF THE DOOR FRAME.
- 1 3/4" SOLID CORE DOOR MOUNTED TO DOOR FRAME AND INSTALLED PRIOR TO INSTALLATION

TOLERANCE UNLESS OTHERWISE SPECIFIED		APPROVED BY:		DATE:	
FRACTIONAL ± 1/64		 A.H.E. MANUFACTURING INC. 127 RT 9 SOUTH BARNEGAT, NJ (800) 488-5905			
DECIMAL .XXX ±.005				PART NUMBER: -	
.XX ±.010		SCALE: 1/4:1		DATE: 1/22/21	
		DRAWN BY: JC		DRAWING NUMBER: DETAIL	
		TITLE: SETBACK KIT			

A-066

Door Height	A	B
80"	1"	39.25"
84"	5"	43.25"
96"	17"	55.25"



Drill $1\frac{1}{2}$ " Hole x $1\frac{1}{2}$ " Deep
 $1\frac{3}{4}$ " Solid Core Door

APPROVED BY: _____ DATE: _____

A.H.E. MANUFACTURING INC.
 127 RT'9 SOUTH BARNEGAT, NJ (800)-488-5905

PART NUMBER: 344 MATERIAL: ASSEMBLY
 SCALE: 1/4" = 1" DATE: 10/14/20 DRAWN BY: JC
 HOME ELEVATOR TITLE: SETBACK-KIT